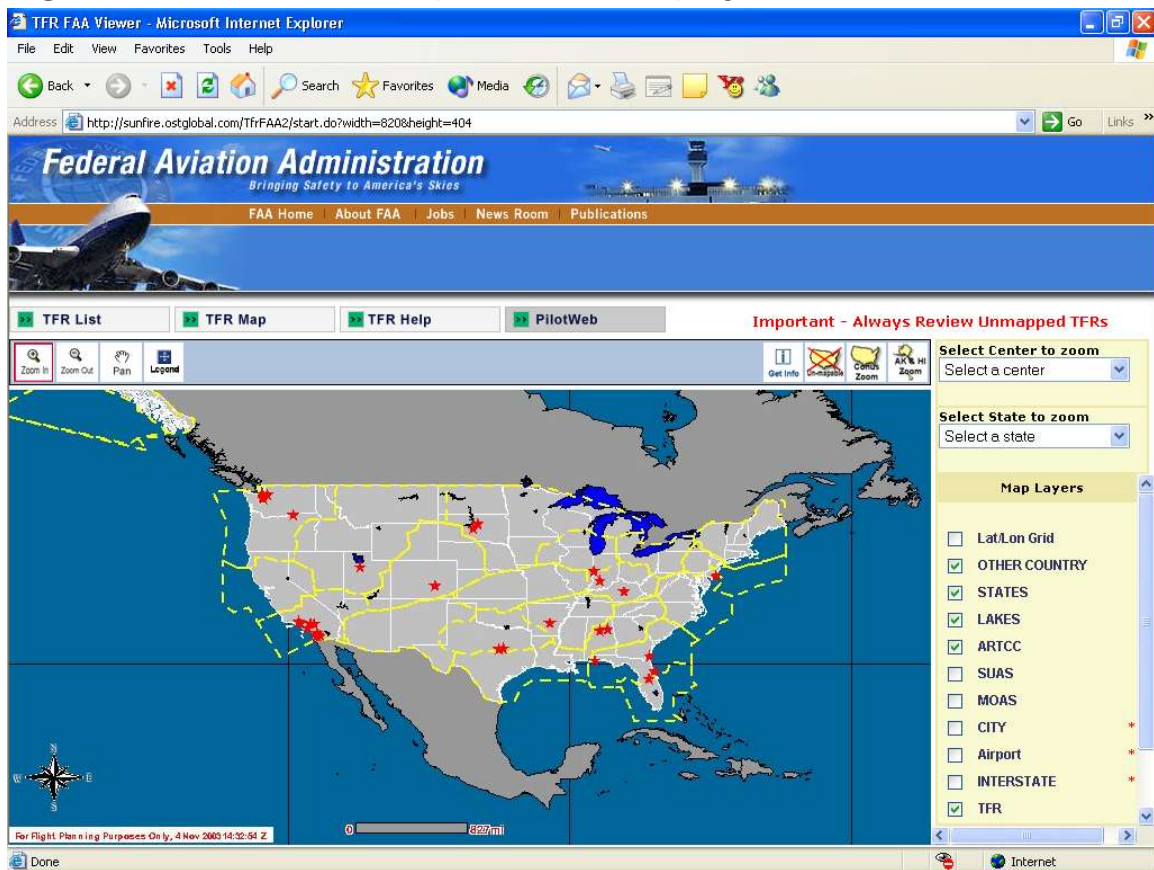


NAIMES Graphical Temporary Flight Restrictions Viewer

1.1 NAIMES Graphical TFR Display

The NAIMES Graphical Temporary Flight Restriction (TFR) Viewer is a feature that allows users to interactively search and display TFRs on the NAIMES site. The Viewer is accessible through the <https://pilotweb.nas.faa.gov> web site.

Figure 1.1.1 - NAIMES Graphical TFR Display



At the top of the page there are the viewer control buttons:

From the top left these buttons control:



Zoom In



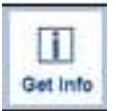
Zoom Out



Pan (Drag)



Display Legend



Display TFR Info



Display Un-mappable TFRs



Display full Continental US



Display Alaska and Hawaii

1.2 NAIMES Graphical TFR Map Layer Display Feature

The NAIMES Graphical TFR Map Layer Display Feature allows the user to customize the display of the map. By simply selecting or de-selecting the different features in the column and clicking on 'Refresh Map' feature can be added and deleted to the display.

As an example: To display MOA information on the map, the user can simply select the MOA feature, refresh the map, and the display will be updated as shown:

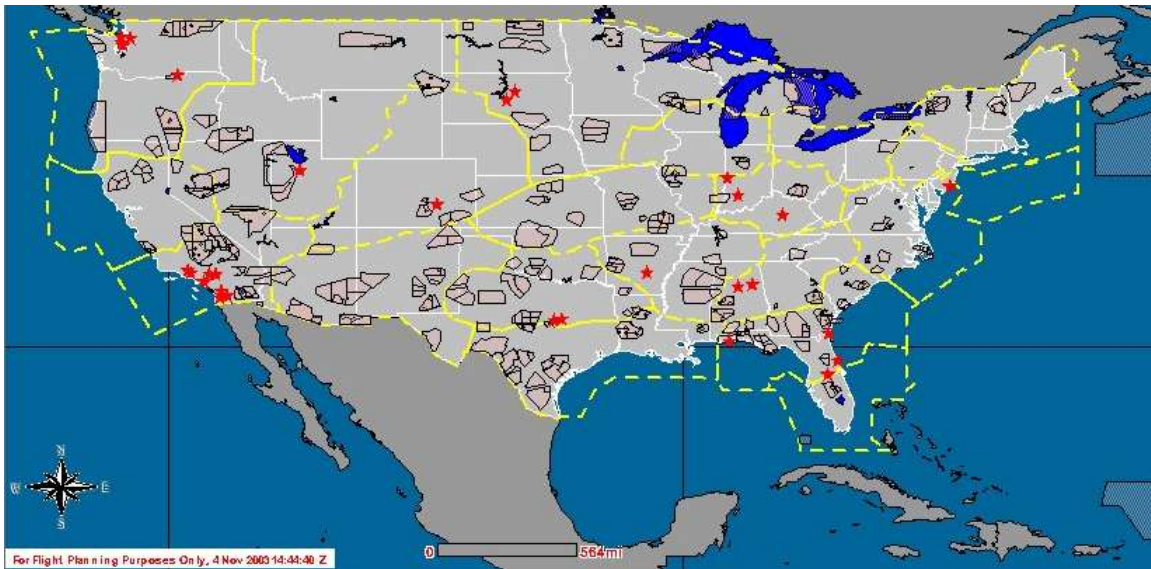


Figure 1.2.1 – Updated TFR Display w/MOA Information

1.3 NAIMES Graphical TFR Display Zoom-In Feature

The NAIMES Graphical TFR Display Zoom-In Feature is the tool that allows users to localize or ‘drill down’ to the level of display and detail needed.

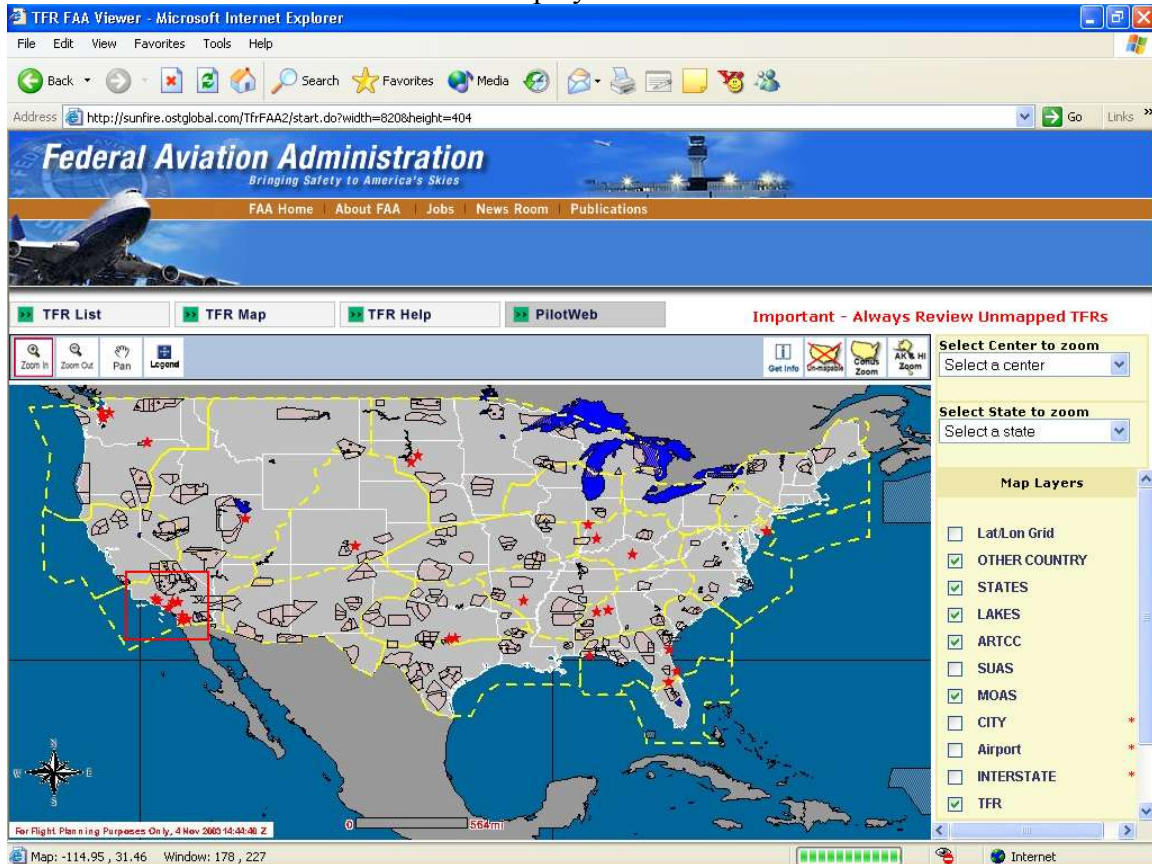



Figure 1.3.1 - Using the Graphical TFR Zoom-In Feature

- To use the NAIMES Graphical TFR Zoom feature ensure that the ‘Zoom In’  button is selected (a red highlight will appear when the button is clicked). This is the default feature for the Graphical TFR Display page.
- Use the mouse to ‘draw’ a square around the area that you wish to zoom-in on
- When the square is drawn and the mouse button is released the page will display the area you have selected

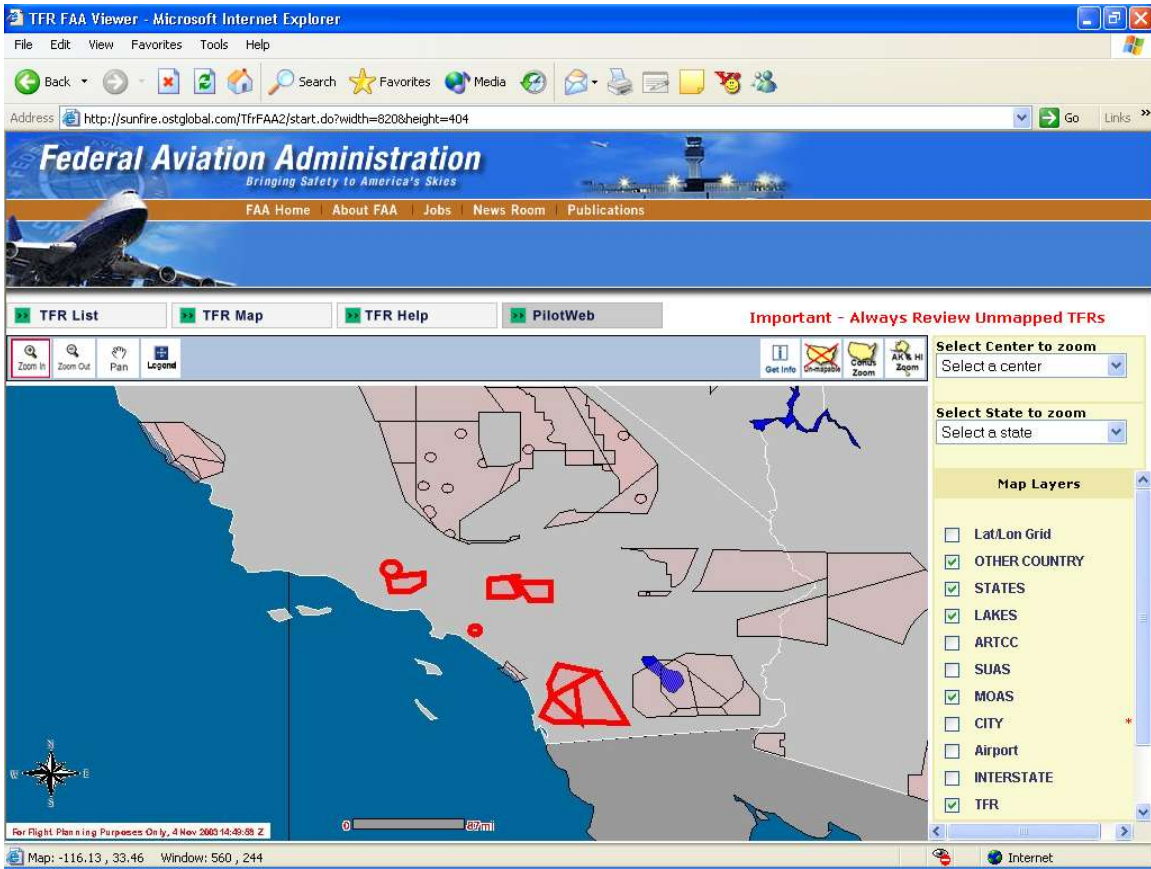


Figure 1.3.2 - Graphical TFR Zoom-In Display

- To display more detail repeat the procedure (above), which will bring you to closer elevations of display

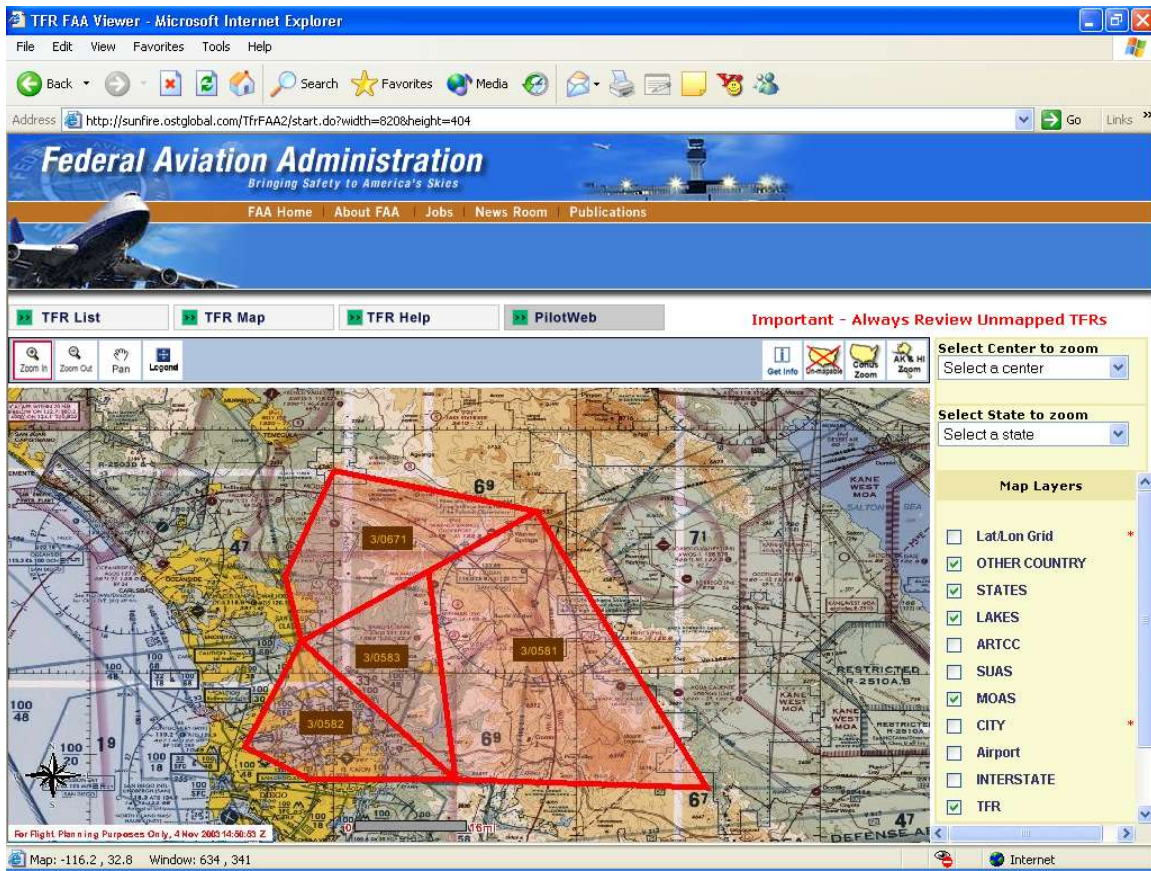



Figure 1.3.3 - Graphical TFR Zoom-In Display (continued)

- At closer elevations the display is updated to show the details of the TFR (i.e. NOTAM number, and it's location on a sectional map).
- The Zoom-In feature remains active, even while the sectional map is displayed and the user can continue to use it to get the level of detail required.
- Users can display any level of detail that they wish by continuing to zoom in on the display by selecting more detailed areas using the mouse.

1.4 NAIMES Graphical TFR Display Zoom-Out Feature

The NAIMES Graphical TFR Display Zoom-Out Feature is another tool that allows users to change to the level of display and detail needed. This feature, the opposite of the Zoom-In feature, allows a user to raise the level of display to the desired 'altitude'.

- To use the NAIMES Graphical TFR Display 'Zoom-Out' feature click on the Zoom-Out  button, which will then be highlighted in red indicating that it is the active zoom feature.
- Clicking on any part of the display will activate this feature. Figure 1.4.2 - NAIMES Graphical TFR Zoom-Out Display (below) shows the results of the Zoom-Out Feature.

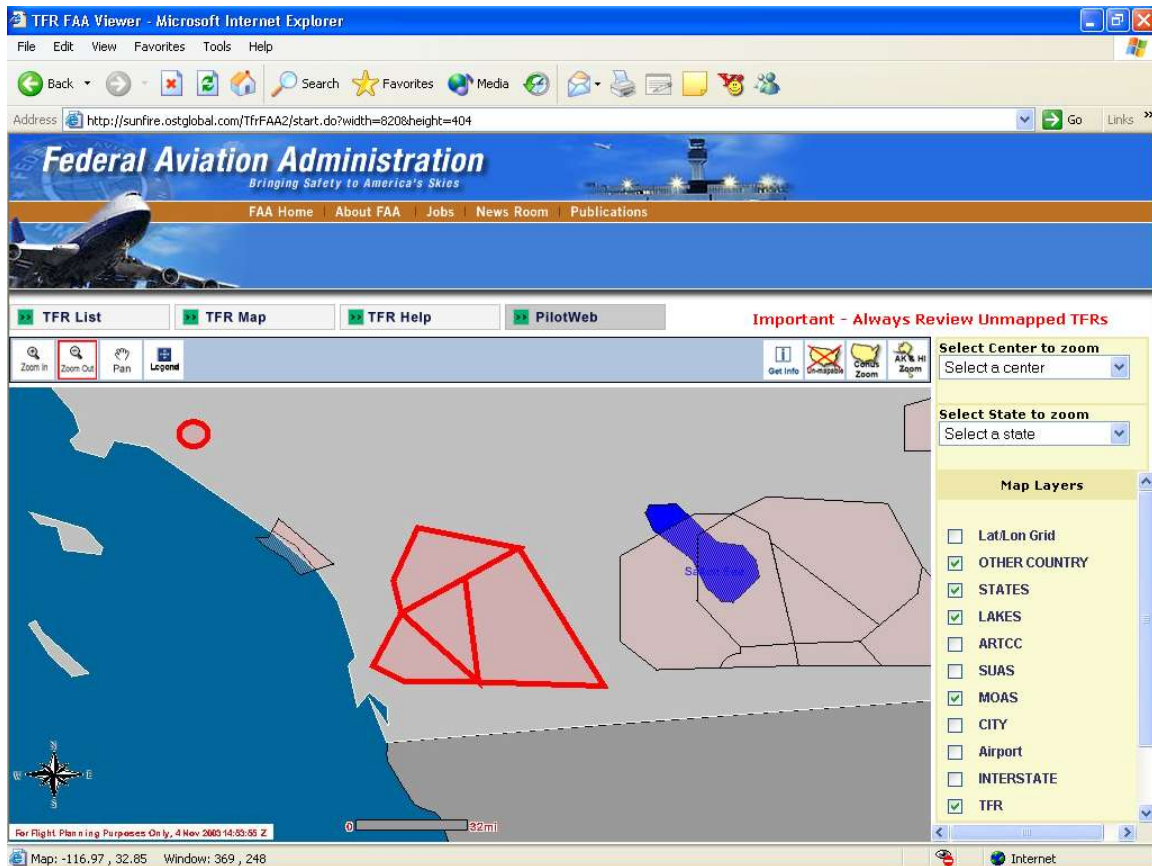


Figure 1.4.2 - NAIMES Graphical TFR Zoom-Out Display

1.5 NAIMES Graphical TFR Display Pan Feature

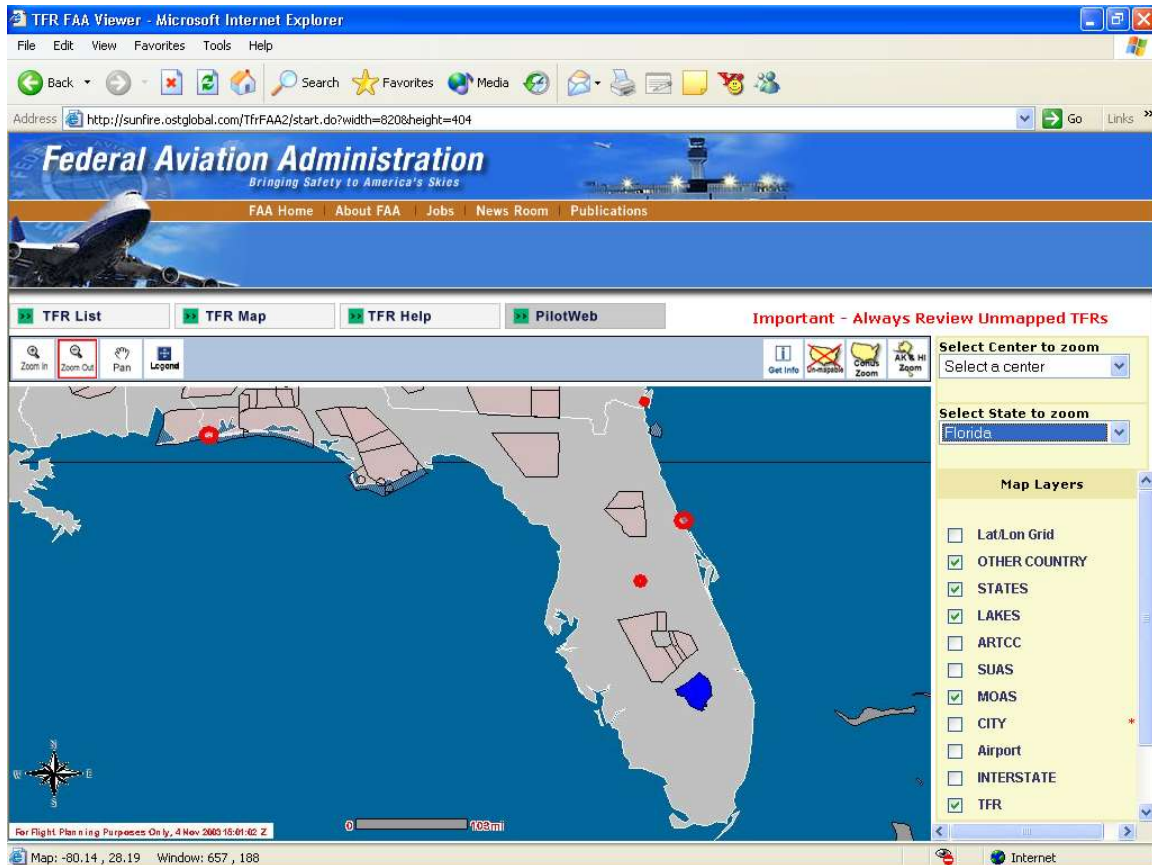



Figure 1.5.1 – Pan Feature

- To use the Pan-Drag Feature from the display that you are currently viewing select the Pan-Drag button  (it will be highlighted in red once selected)

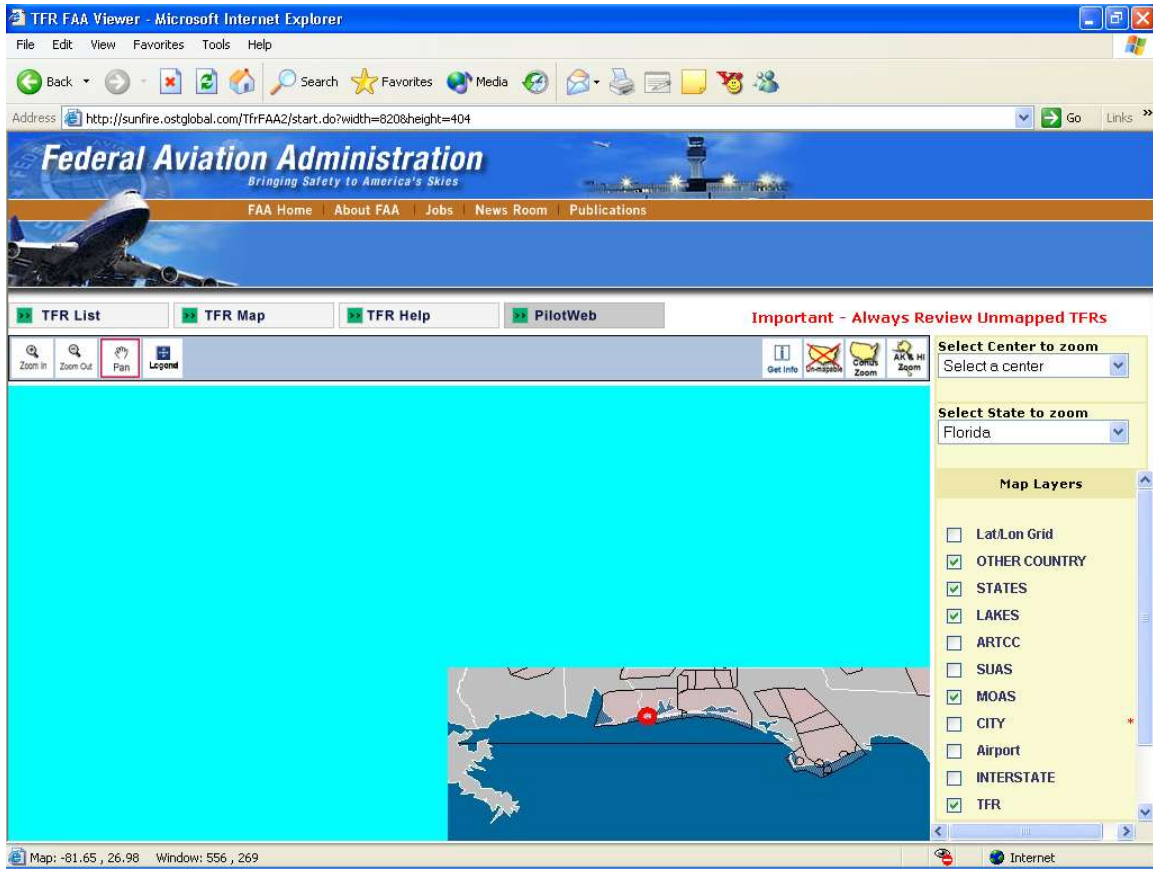


Figure 1.5.2 - Pan-Drag Feature Use

- Using your cursor drag the map in any direction you wish while holding the left mouse button down (in this example the map is dragged to the right approximately 2/3 of the width of the screen)

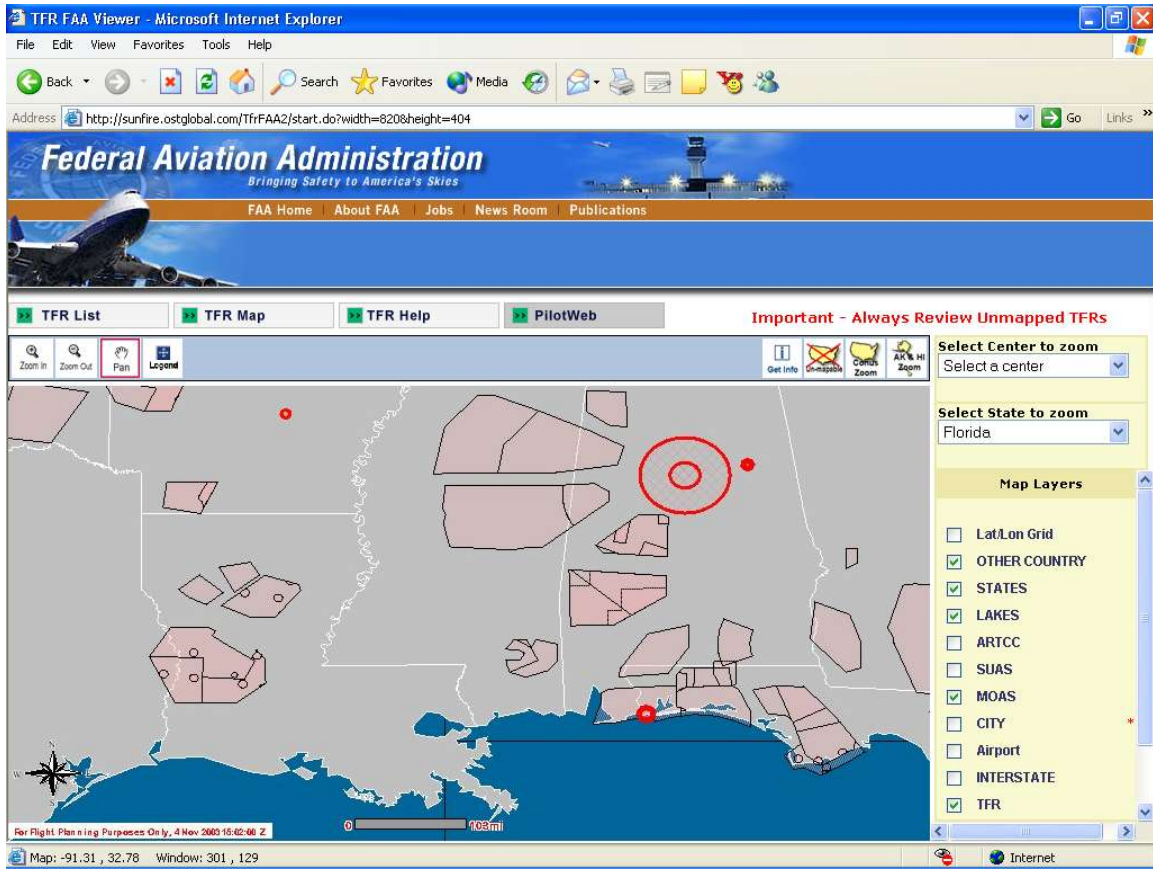


Figure 1.5.3 - Pan-Drag Feature Result

- When the left mouse button is release the map is repositioned and re-drawn based on the user's directional movement.

1.6 NAIMES Graphical TFR Display Get Info Feature

The Graphical TFR Get Info feature is used to display TFR NOTAM data in a new web page window.

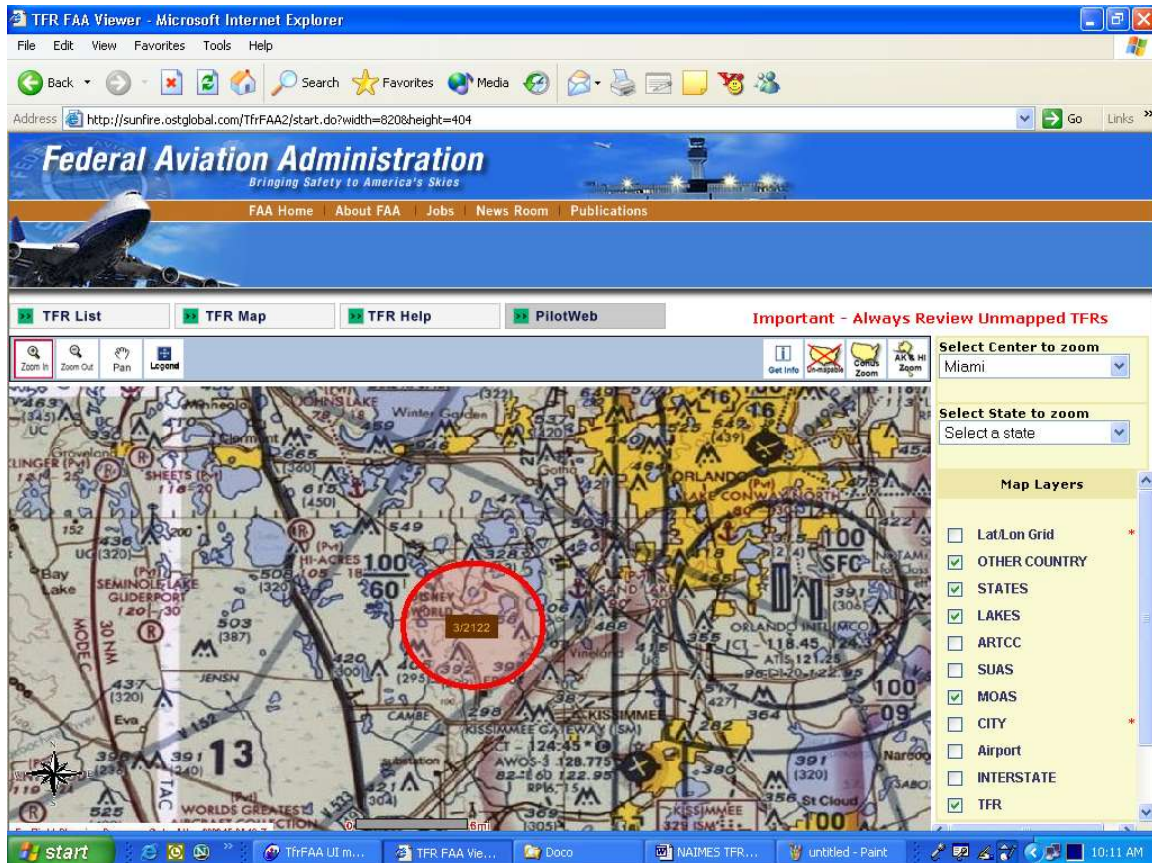



Figure 1.6.1 – Get Info Display Feature

- To display the text of the TFR NOTAM users can select the  button, which will be highlighted in red, and click directly on the displayed TFR's number. When the number is clicked a new window will open with the actual text of the NOTAM.
- See Figure 1.6.2 - Graphical TFR NOTAM Text Display.

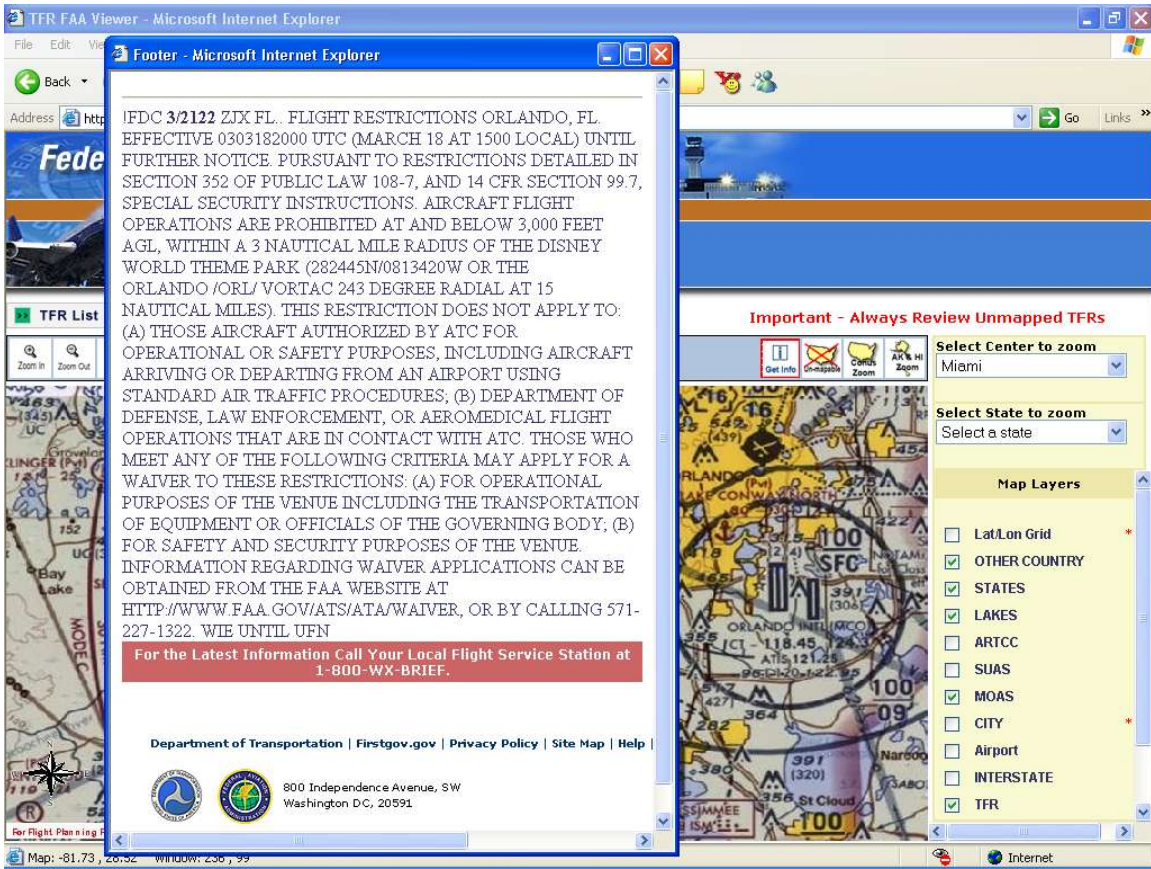


Figure 1.6.2 - Graphical TFR NOTAM Text Display

1.7 NAIMES Graphical TFR Display Other Features

Other self-explanatory features incorporated into the Graphical TFR Display are:

- Select Center to zoom – performs an immediate zoom to the center selected from the drop-down menu.
- Select State to zoom – performs an immediate zoom to the state selected from the drop-down menu.
- Un-Mapable TFRs – displays a list of TFRs that are not currently mapped in the Graphical TFR product. **This list should be reviewed frequently.**
- TFR List – Lists all active TFRs (both mapable and unmapable)
- Legend – Displays the Graphical TFR Legend